

MONTHLY MEMBERSHIP PROGRESS REPORT

LOCATION REP OF SRI LANKA

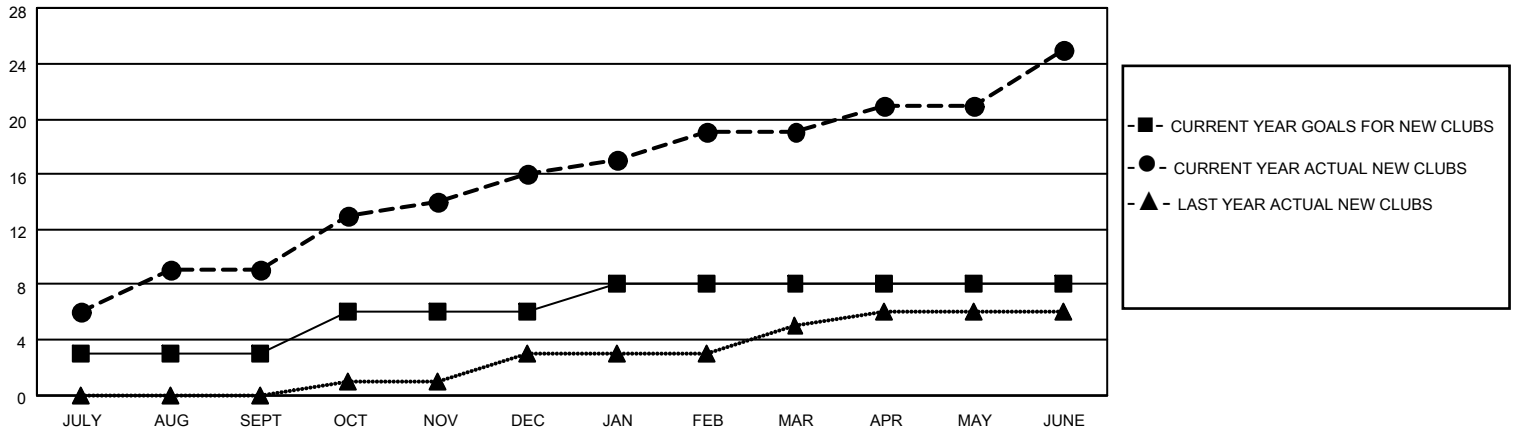
District 306 B2

Results as of: 6/30/2022

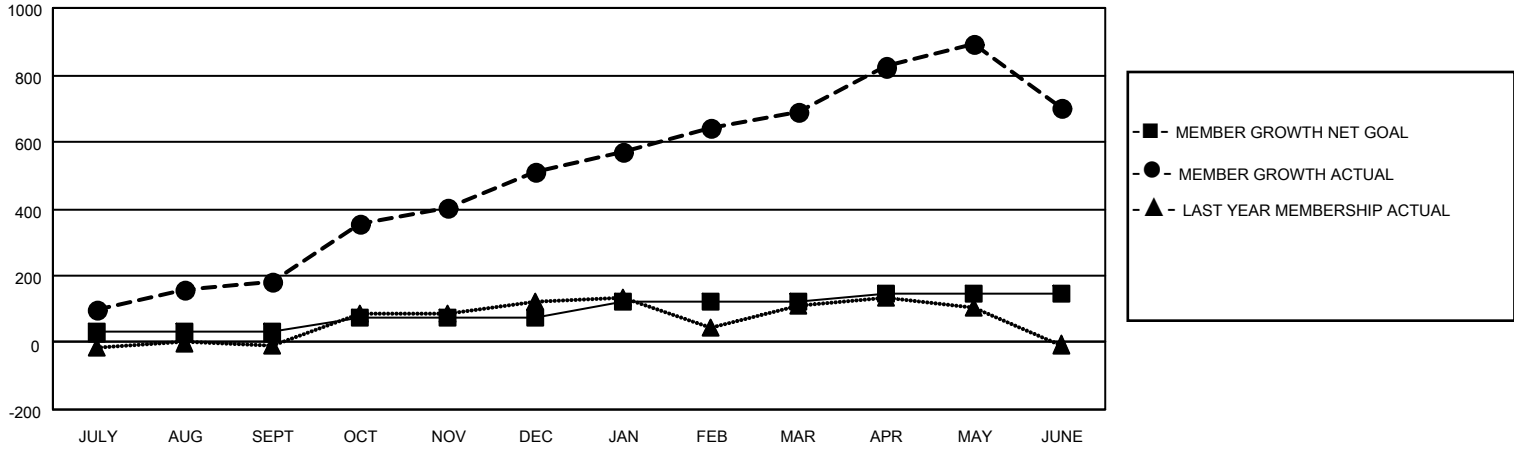
Clubs			
RESULTS FOR 2021-2022			
QUARTER	NEW CLUB GOAL	NEW CLUBS	DROPPED CLUBS
JULY/AUG/SEPT	3	9	0
OCT/NOV/DEC	3	7	0
JAN/FEB/MAR	2	3	0
APR/MAY/JUNE	0	6	0

Members			
RESULTS FOR 2021-2022			
QUARTER	MEMBER GROWTH NET GOAL	MEMBER GROWTH ACTUAL	DROPPED MEMBERS ACTUAL (including transfers)
JULY/AUG/SEPT	30	298	88
OCT/NOV/DEC	45	419	83
JAN/FEB/MAR	50	206	20
APR/MAY/JUNE	20	431	397

GOALS AND ACTUAL NEW CLUBS CUMULATIVE



GOALS AND ACTUAL MEMBERS CUMULATIVE



DROPPED CLUBS: 0

112 CLUBS OF 130 ADDED 1 OR MORE NEW MEMBERS

GENDER DISTRIBUTION

MALE	2,574 (71.74%)
FEMALE	1,014 (28.26%)
NON BINARY	0 (0.00%)
PREFER NOT TO ANSWER	0 (0.00%)

DROPPED MEMBERS

[CLICK HERE FOR CUMULATIVE MEMBERSHIP DATA](#)

DECEASED	23
CLUB CANCELLED	0
OTHER	565
TOTAL	588

TOTAL FAMILY UNIT MEMBERS 1,497

FAMILY MEMBERS PAYING HALF DUES 841